

grillo.

LIVING

SPRING/SUMMER 2023

This project
by **Raine Clarke-Wills** 46

Burnley Reborn: **Alan Titchmarsh** 56

Grillo launches in **Australia** 20

Grand Designs: Clayworth Cottage 4

A Campfire Chat: **Tim Horner** 66

Upgrade to **Life 2.0:** The Mercian 72





BRINGING PEOPLE
TOGETHER
AROUND FOOD &
FLAMES.

Our vision was to create an outdoor kitchen that was bold yet beautiful. A kitchen that could fit into any space, whether it was a small roof terrace in London, or a large country estate. A kitchen that could bring people together around food and flames.

The Grillo Vantage was born.

CONTENTS



4

CLAYWORTH COTTAGE

Grillo featuring on a Grand Designs house in the Chilterns



12

INTRODUCING SLATTED

A paradigm-shift in outdoor kitchen design



20

LAUNCHING IN AU

From the home of London Dry to the home of Victoria Bitter



54

SCIENCE OF LIGHTING

Lighting plays a crucial role in the ambience of your project



56

ALAN TITCHMARSH

Alan & his team transform a Burnley builder's yard



60

GRILL ROVER

The show's on the road. Smell smoke? Follow your nose.



32

FORM = FUNCTION

Quality and beauty pervade everything we do



40

A PRETTY PLOT

A stunning project in Stratford-Upon-Avon



46

OXSHOTT

Raine Clarke-Wills paints a masterpiece in Surrey



62

MADE IN CHELSEA

Sometimes big ideas work better in small spaces



66

TIM HORNER

A campfire chat with the Aussie-born British garden designer



72

THE MERCIAN

A new way of living at The Mercian - upgrade to Life 2.0

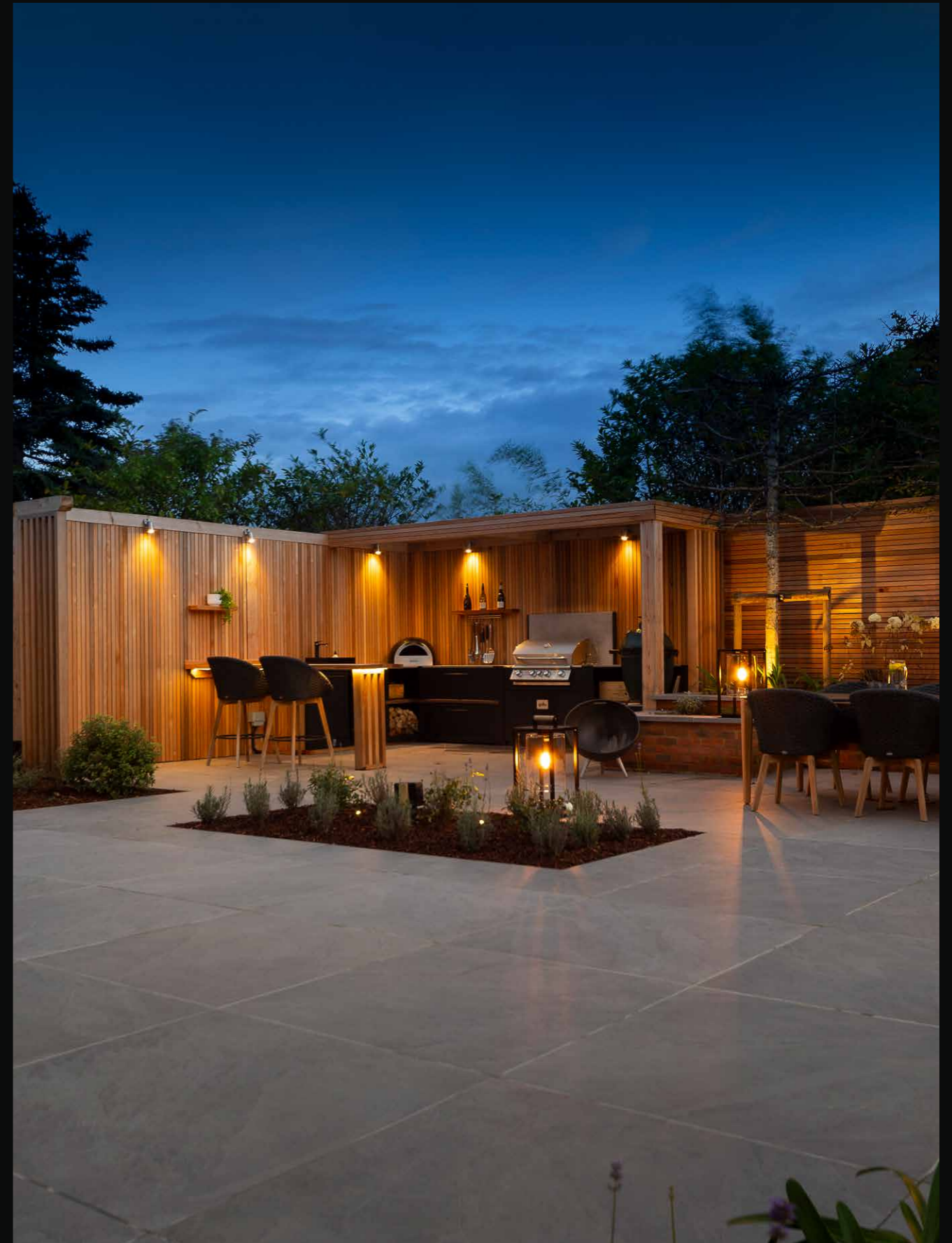
LIGHT UP THE NIGHT **OXSHOTT**

Raine Clarke-Wills paints a masterpiece
in the South London suburbs.

Teamwork makes the dream work, as they say. And what a dream; this is the acme of a Surrey suburban townhouse garden.

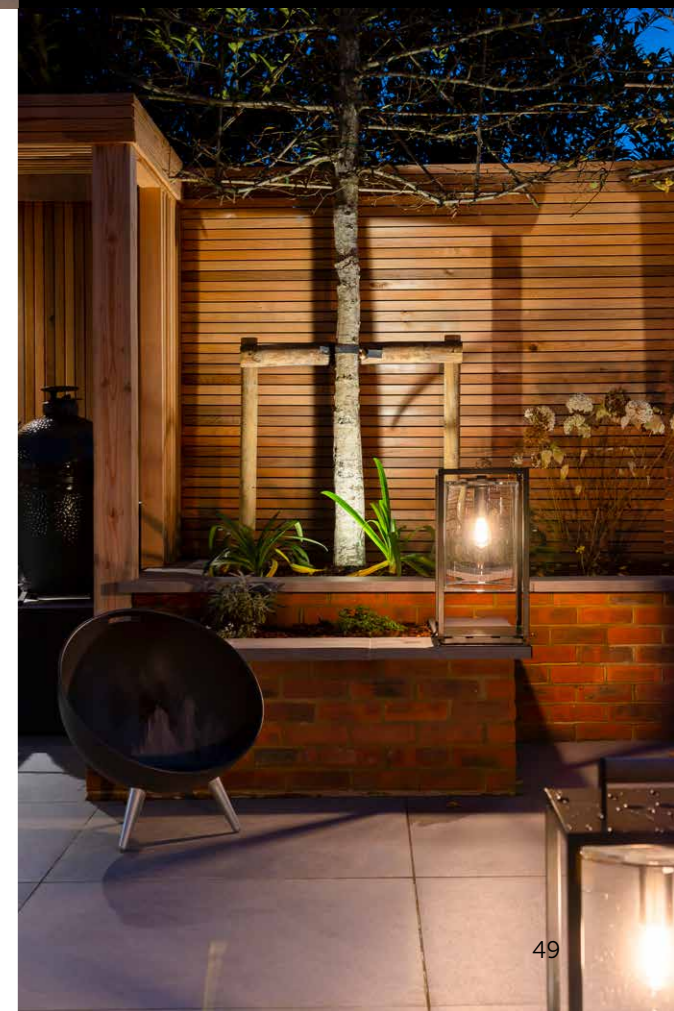
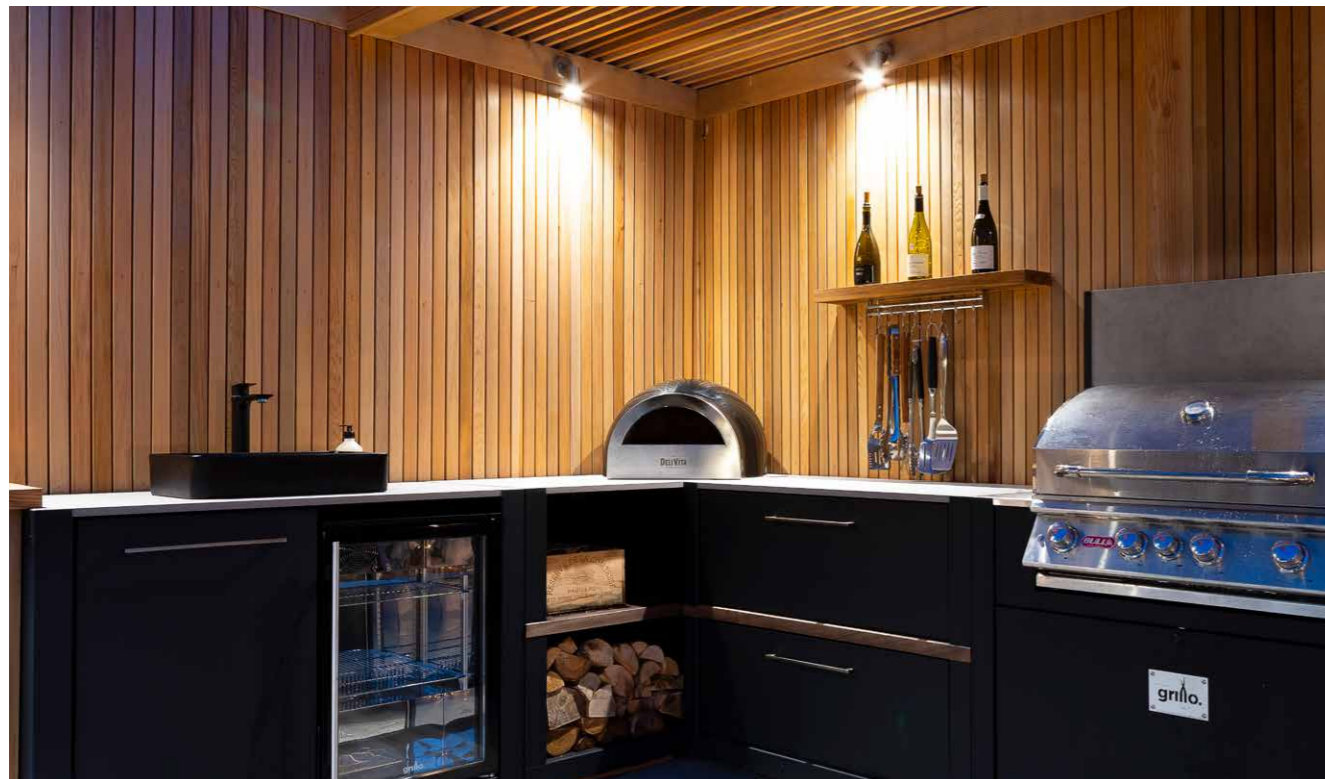
The team behind the teamwork of this masterpiece in Oxshott, Surrey, are Raine Garden Design Ltd, Bushy Business Ltd, Hampshire Garden Lighting, and Forest Eyes Photography.

Everywhere you look, some new artful detail demonstrating their collective expertise hits you. The beautiful and tasteful selection of materials. The very mature, regimented pleached beech hedge. The harmoniousness of the zoning; tidy yet so varied and interesting. The ancient olive, likely dating back to the reign of Victoria. The warmth and depth afforded by the layered lighting. The seamless extension of the Home from inside to out; because in this dream, the garden is Home as much as the house is.





“A SEAMLESS
EXTENSION
OF THE HOME
FROM INSIDE
TO OUT;
BECAUSE IN
THIS DREAM,
THE GARDEN
IS HOME AS
MUCH AS THE
HOUSE IS.”





MEET THE DESIGNER

Raine Clarke-Wills is an award winning garden designer. She has been creating stunning gardens for clients throughout Surrey, Sussex, Hampshire and Berkshire for over 22 years.

Raine, this is a stunning project! Can you tell us a bit more about it?

Sure, the project involved creating a modern outdoor space in a contemporary style for clients who wanted a balance of evergreen structure and summer colour. They were particularly interested in having an al fresco dining area for entertaining, socialising, and parties. The garden also needed to be for all the family, including a decent size lawn and a children's area discreetly positioned.

What inspires you for a project like this?

My inspiration comes from the joy of analysing the thoughts of the clients and interpreting these thoughts into a new garden they are delighted with.

What challenges did you face?

As we work as perfectionists in the creative world, there are always challenges. One of the challenges we faced with this project was the handling and planting of the large mature pleached trees for which we had to hire special machinery to position in place. We spend time on detail which can lengthen the build time of the garden project but I'm sure we all appreciate it's all in the detail.

Did you recommend Grillo, or did the clients ask for us?

The clients weren't looking at any particular outdoor kitchen supplier, but once I introduced them to Grillo products, they were impressed and wanted to investigate further. I would certainly recommend Grillo outdoor kitchens as the products are well constructed from quality materials and also having the benefit of being made in the UK. One of the main advantages of using Grillo is the fact that the units are modular which makes them flexible in designing and configuring the final layout.

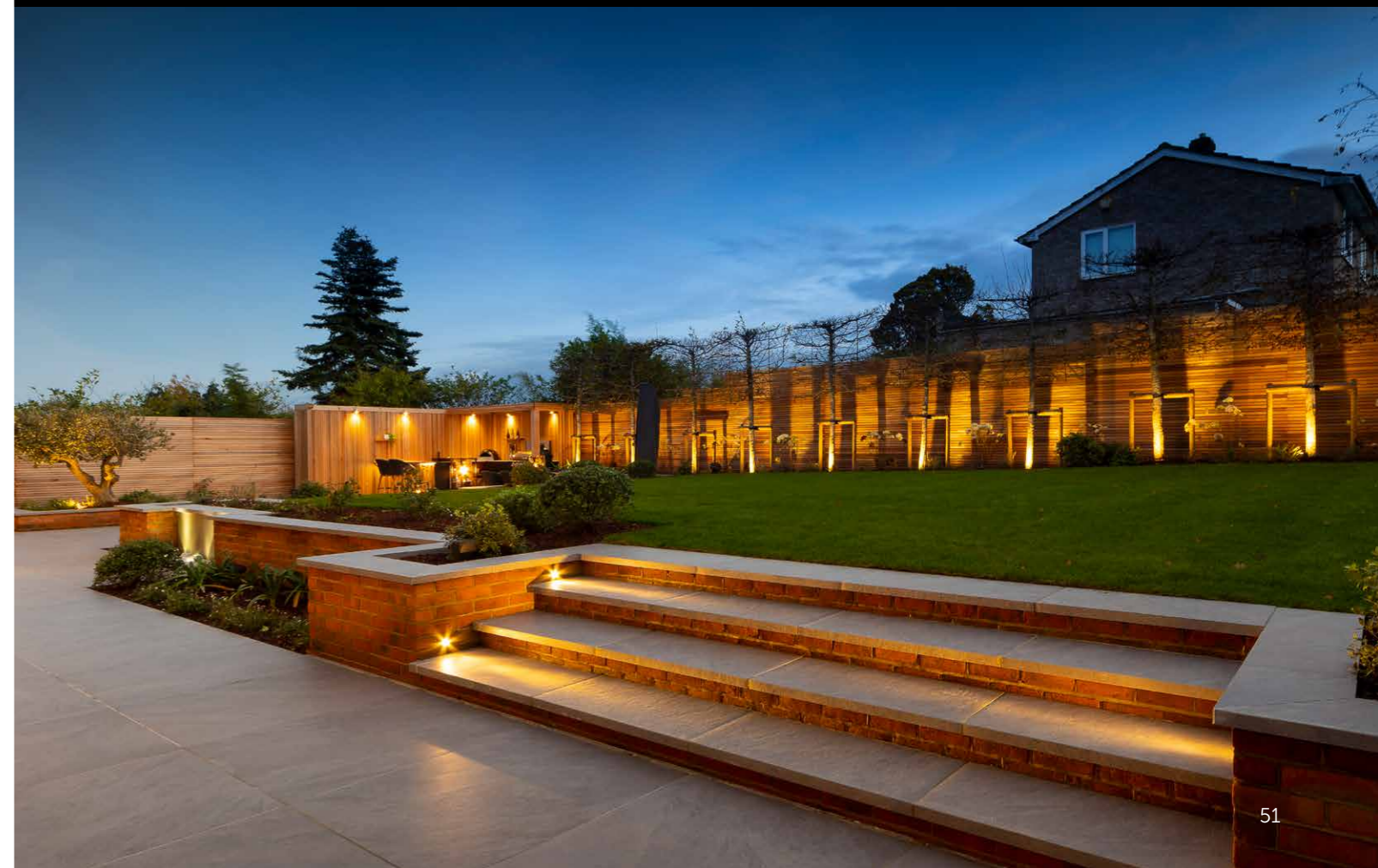
Can you tell us about the materials used?

The materials used for the new garden were mainly cedar and large pale grey porcelain stone slabs. These two materials complemented one another and introduced the contemporary style they were seeking into their new garden.

Did the project turn out as planned?

Yes, the project turned out according to the client plan and design with the addition of a gorgeous bespoke cedar slatted roof above a section of the Grillo outdoor kitchen.

rainegardendesign.co.uk





THE PROJECT

DESIGNER
Raine Garden Design Ltd

LIGHTING
Hampshire Garden Lighting

PLANTING
Bushy Business Ltd

PHOTOS
Forest Eyes Photography

LOCATION
Oxshott, Surrey, UK

PROJECT
Design and build of a multi-purpose outdoor space in a contemporary style.

WE LIKE
Just wow!